



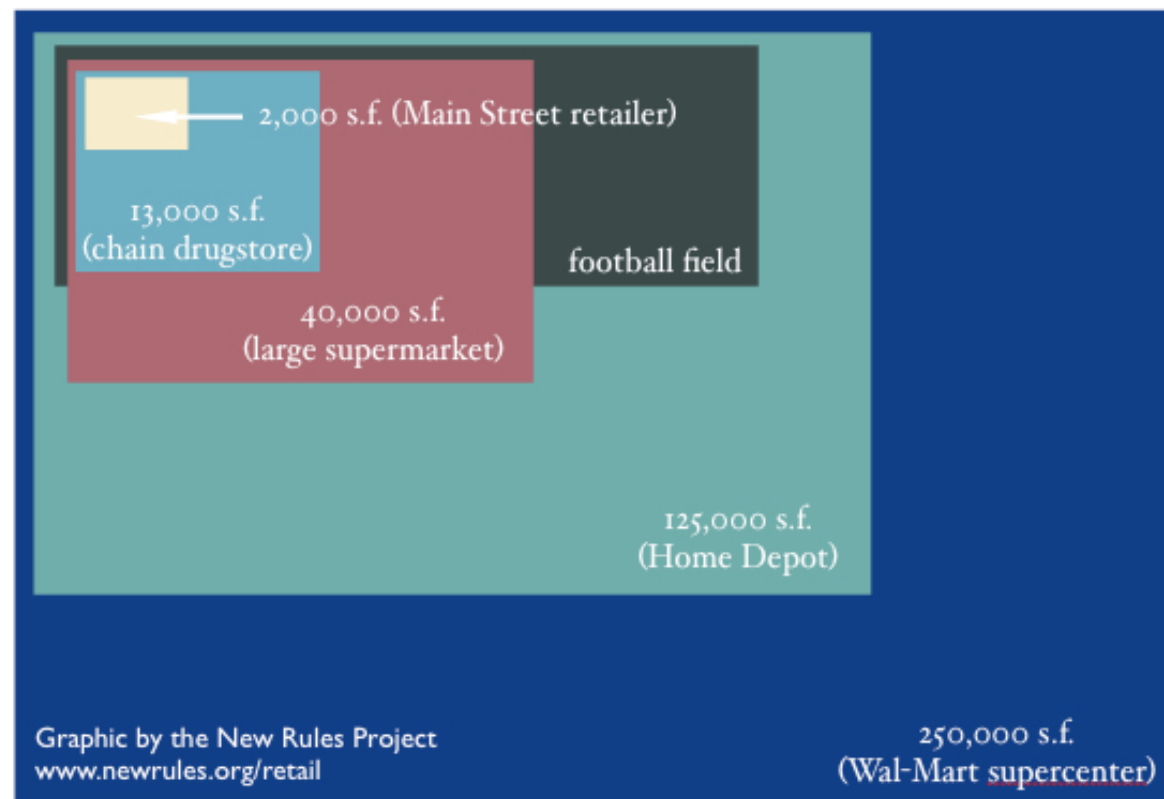
Leveraging Embedded-to-Cloud Framework for Retail Environments

Kunal Mankodiya, Rolando Martins, Utsav Drolia, Jon Francis, Rajeev Gandhi, and Priya Narasimhan
Electrical & Computer Engineering, Carnegie Mellon University, Pittsburgh, USA (Email: priya@cs.cmu.edu)

ANDYVISION THE FUTURE OF RETAIL

"Pain-Points" in Retail

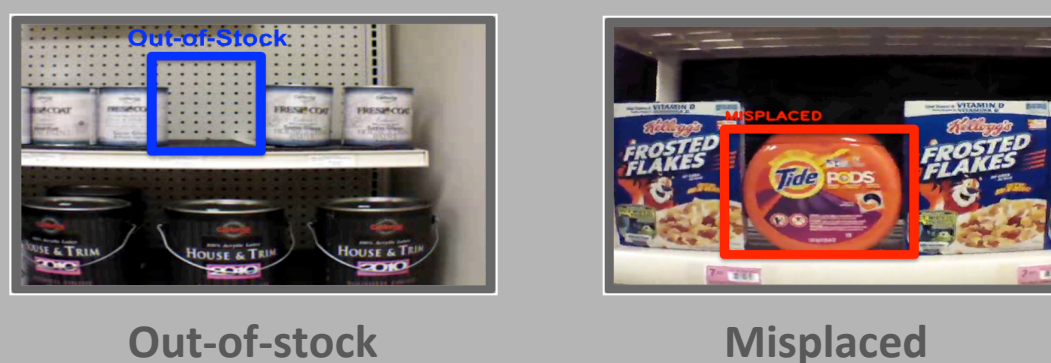
How Big Are Big-Box Stores?



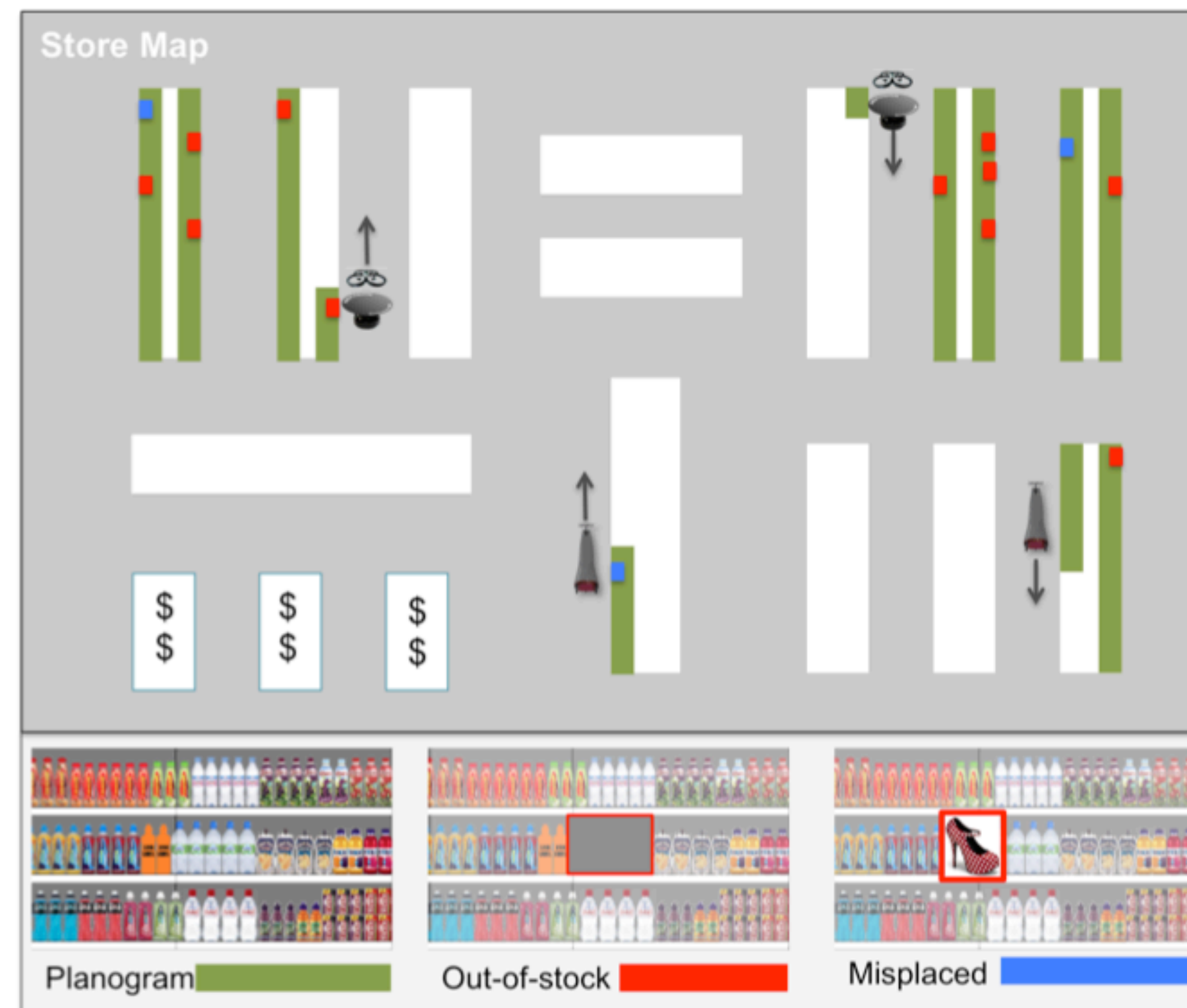
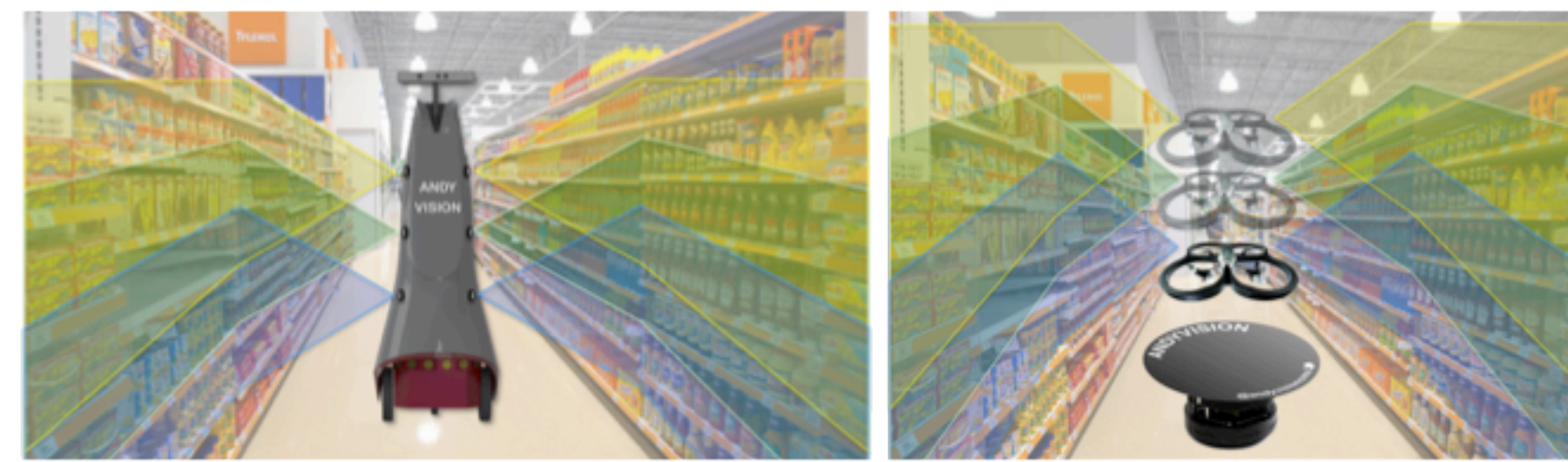
Stores today carry
15000-60000 products

Labor Intensive & Inefficient
Retail Operations

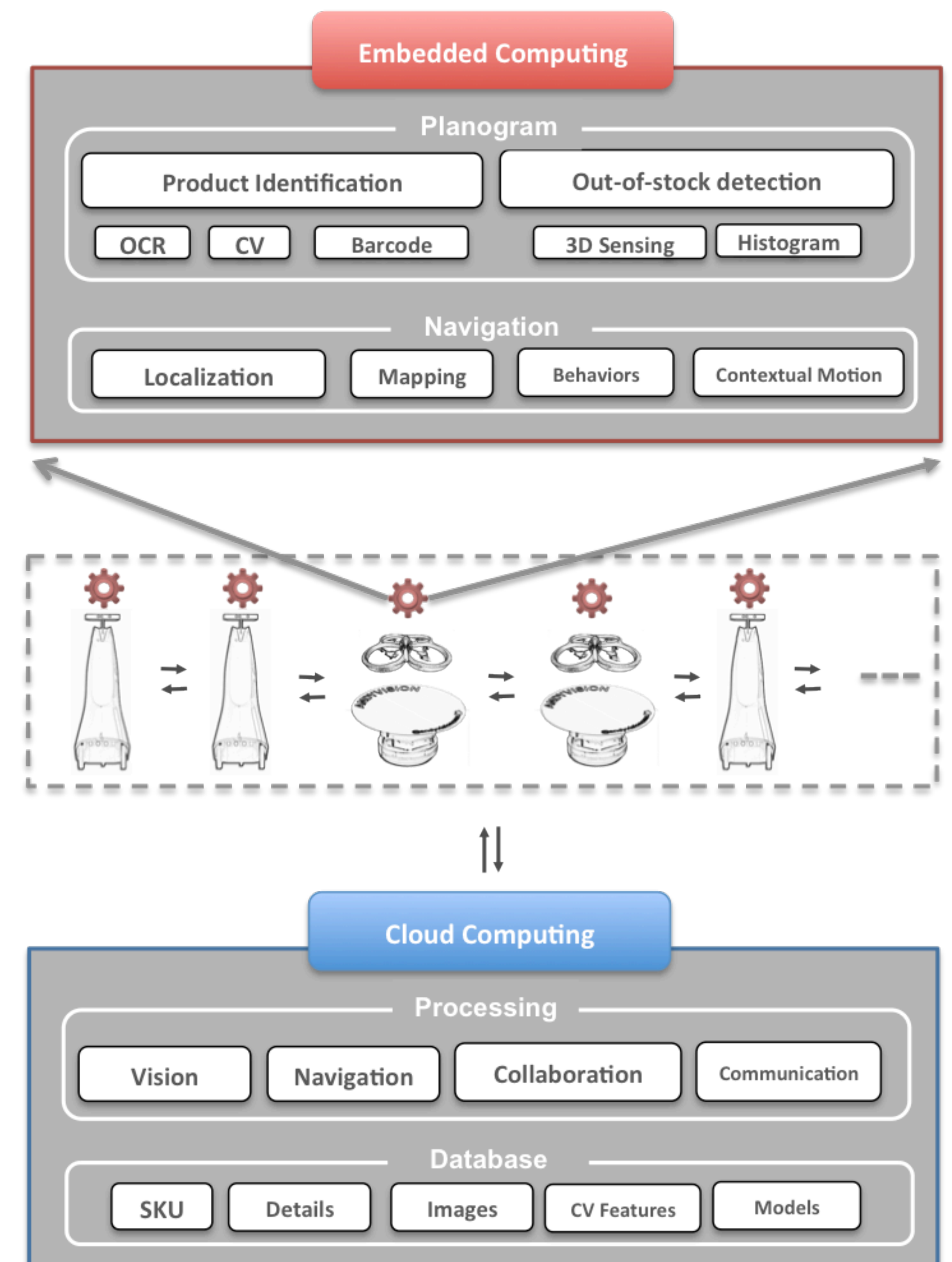
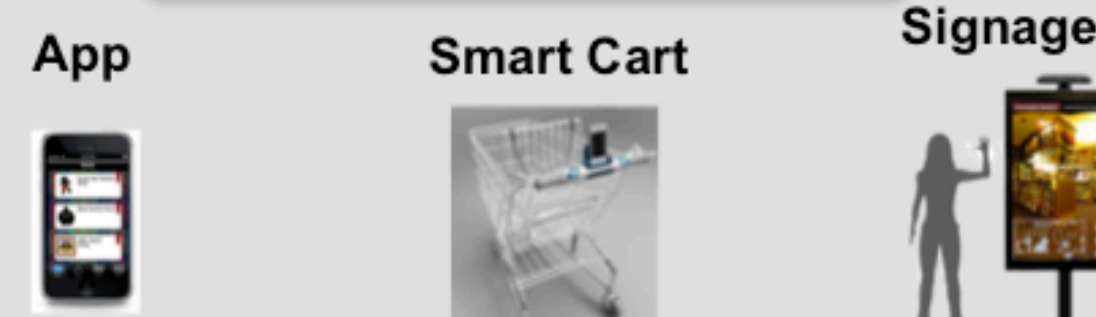
Inventory Distortion Issues



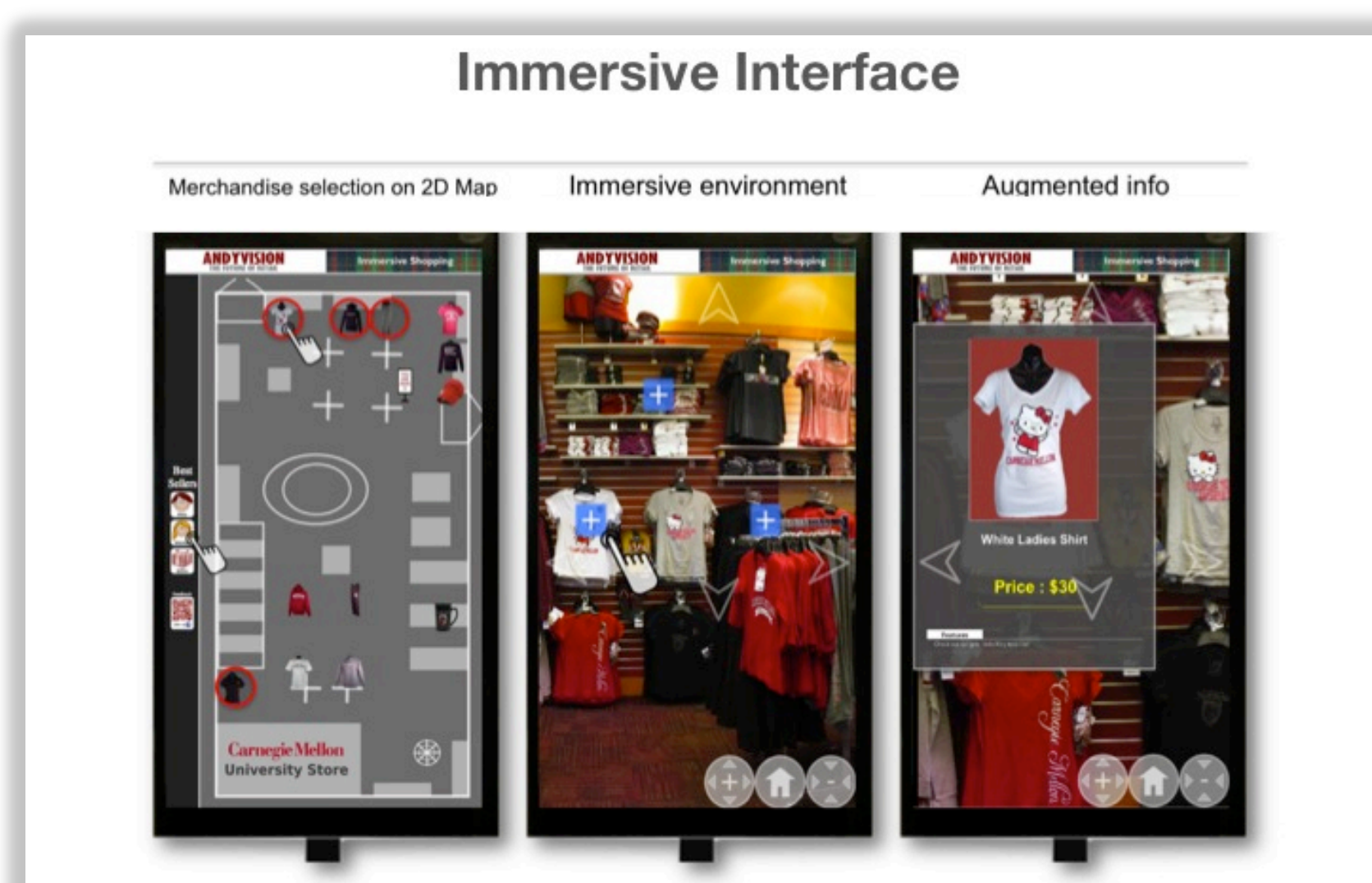
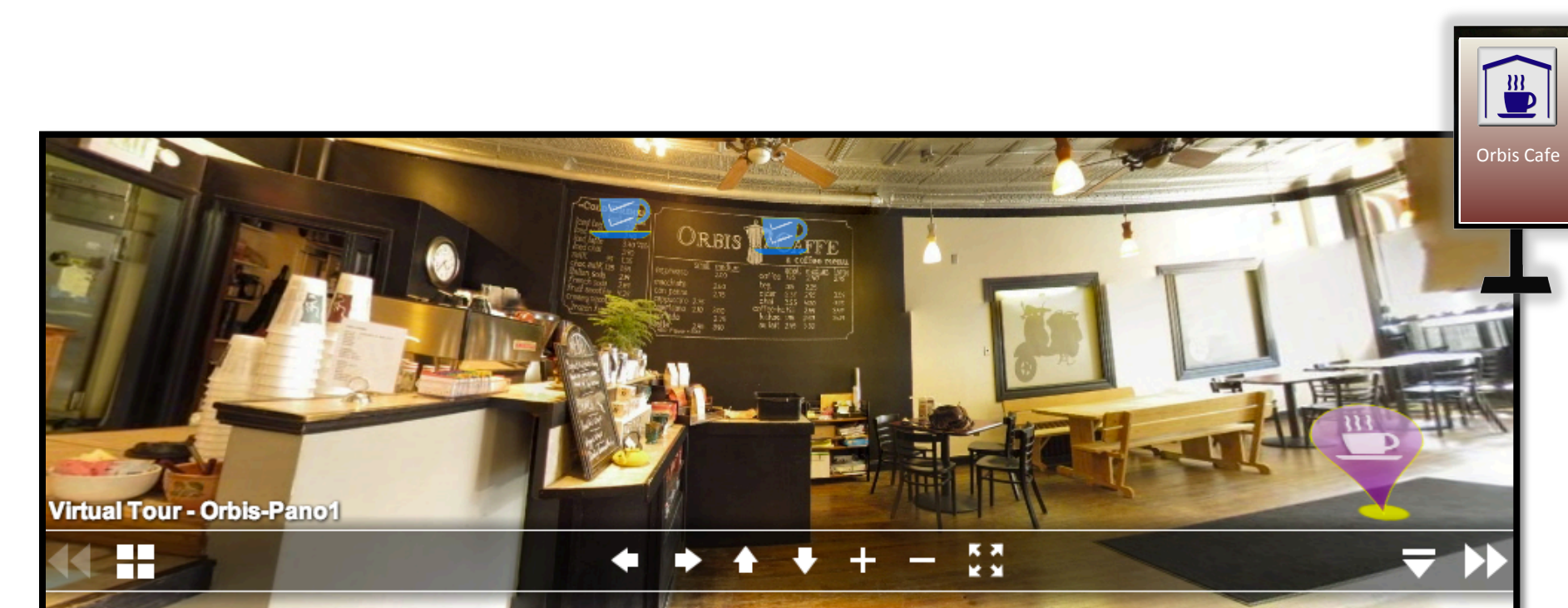
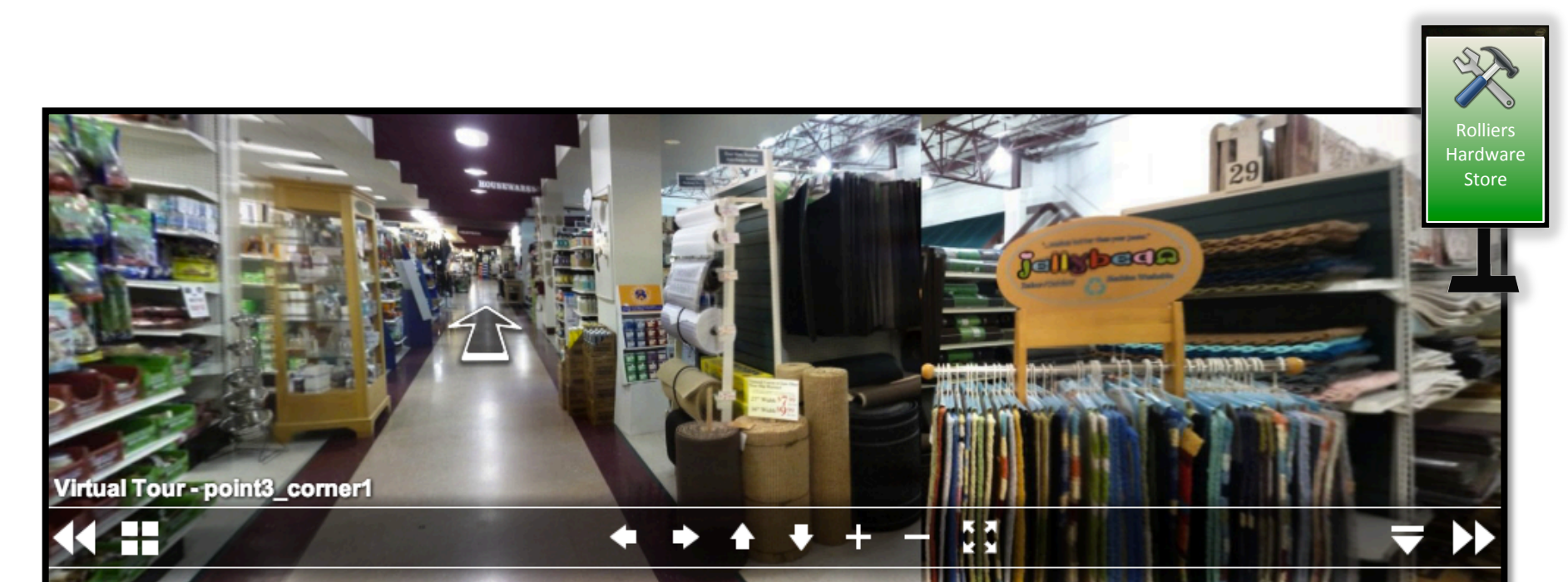
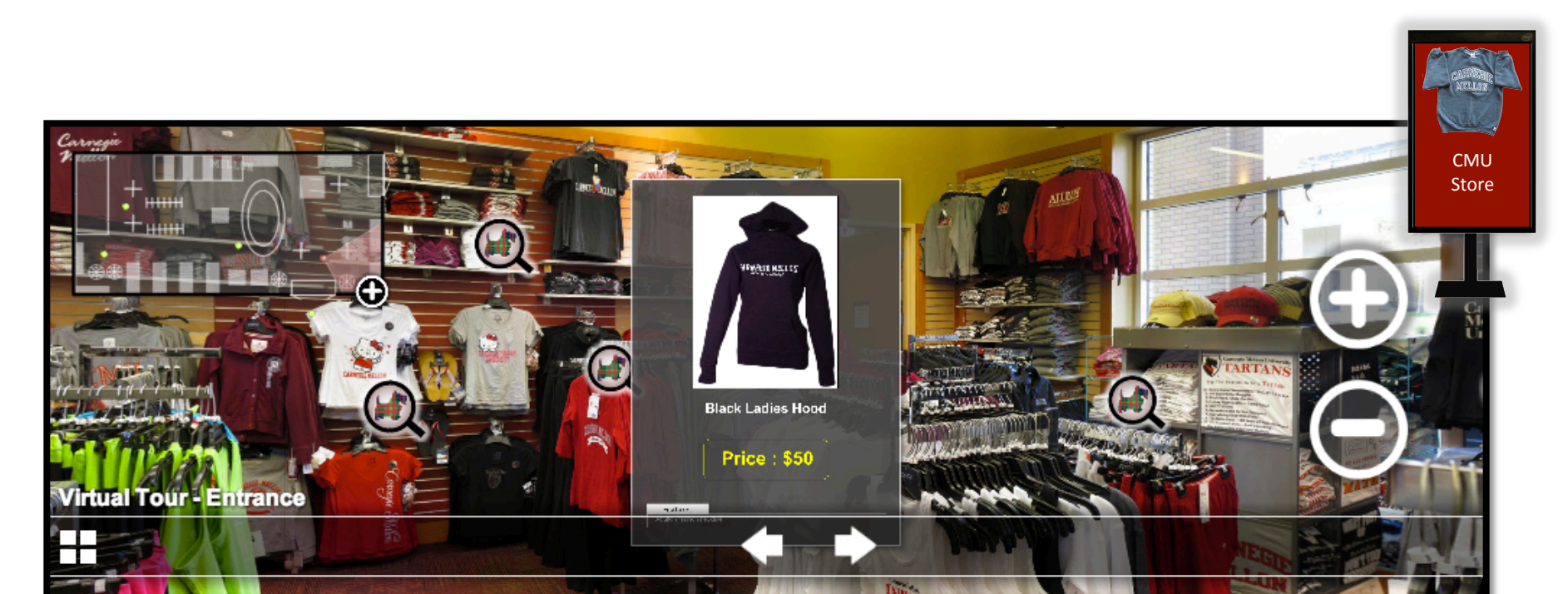
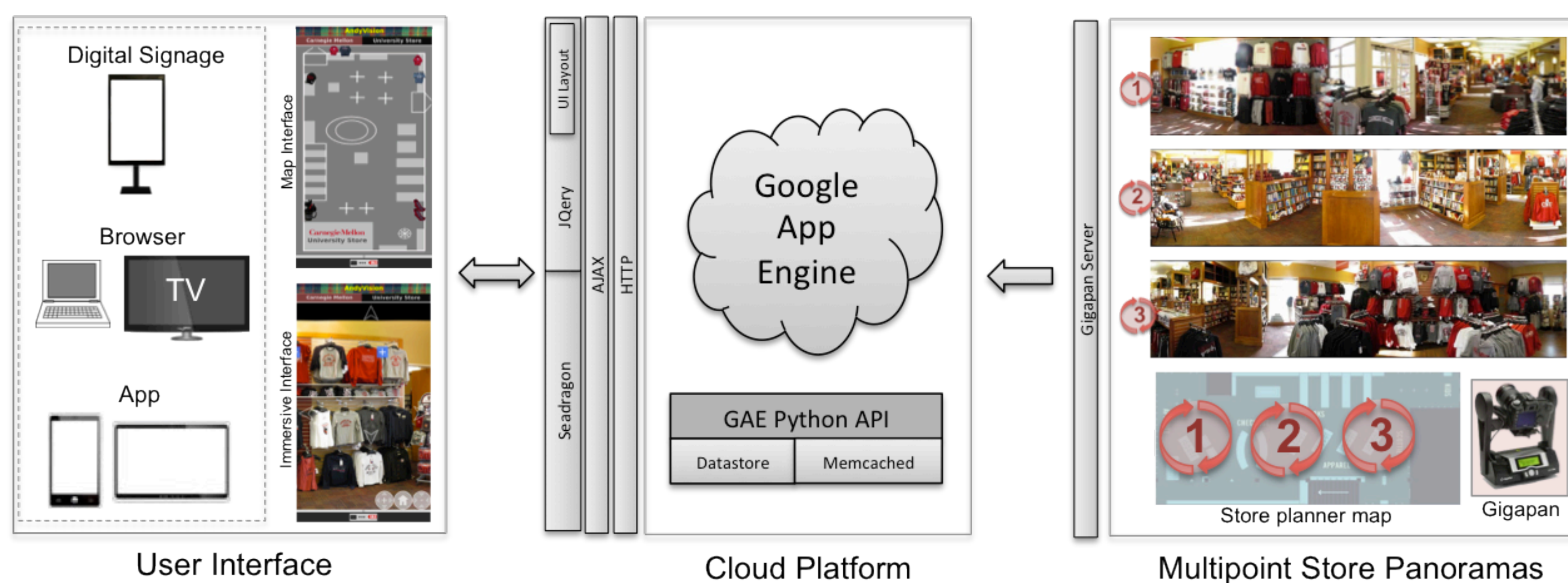
Planogram
Compliance



Consumer Infotainment



AndyStores – Cloud-Driven Immersive Retail Environments



*This work is supported by Intel Corporation under the Intel Science and Technology Center - Embedded Computing (ISTC-EC).

